

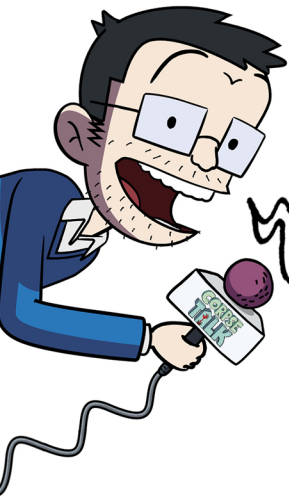


Cleopatra

KS2 Learning Resource

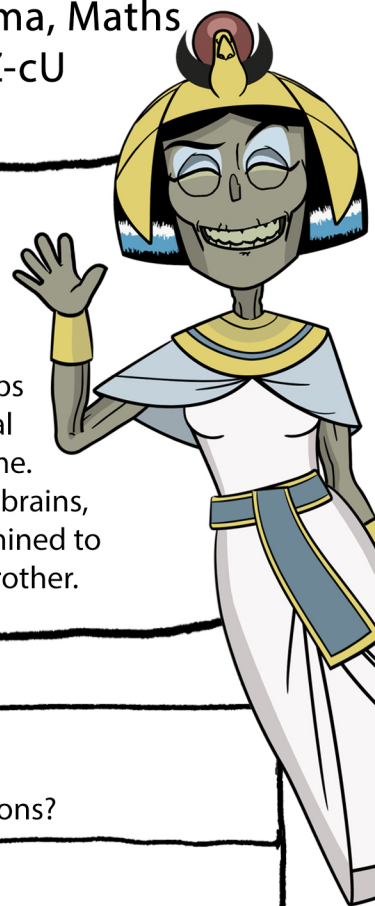
Curriculum links: History, Literacy, Drama, Maths

Watch Here: <https://youtu.be/bP-Nt-7Z-cU>



Watch the dead famous come to life in this animated history show based on the popular "Corpse Talk" graphic novel series by Adam and Lisa Murphy.

In this episode, the Ancient Egyptian Queen, Cleopatra, stops by the Corpse Talk studio to discuss her origins, her unusual family arrangements and her exciting travels to Ancient Rome. Born approximately 2000 years ago, Queen Cleopatra had it all - brains, charm and ruthless ambition. Despite challenges, she was determined to keep her throne and fought a bitter civil war against her little brother.



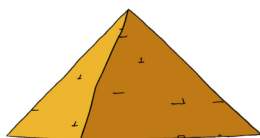
Dig up the Past

When you've watched the episode, can you answer these questions?

| | | |
|--|--------------------------------------|--------------------------------|
| Where were Cleopatra's family originally from? | Why did Cleopatra marry her brother? | How did Cleopatra meet Caesar? |
|--|--------------------------------------|--------------------------------|

Fun Fact

Cleopatra claimed that she was the reincarnation of the Egyptian god Isis!



Dead Quick Challenge

What do you think Cleopatra's teacher might have written on her school report? (What was she studying? Did she work hard? Was there one subject she was particularly good at?)



Deadly Dates

Cleopatra was born in 69 BCE in the city of Alexandria in Egypt. She became queen of Egypt in 51 BCE and reigned until her death in 30 BCE.





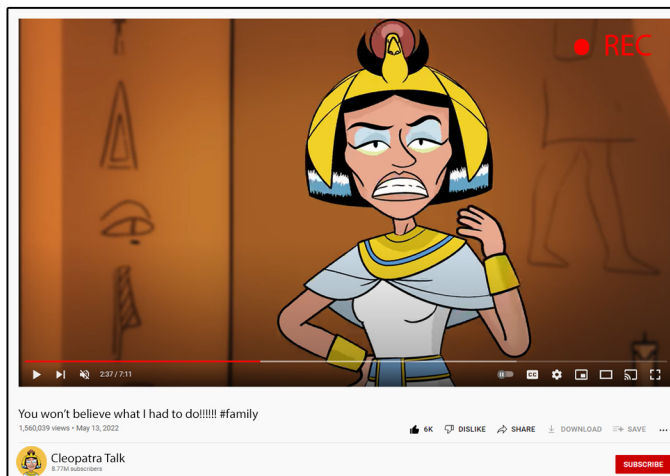
Cleopatra

KS2 Learning Resource

Curriculum links: History, Literacy, Drama, Maths

Produce an episode of 'Cleopatra Talk'!

You, Cleopatra, powerful queen of Egypt, are starting your own vlog called 'Cleopatra Talk'. Plan and produce your first video introducing yourself and telling your audience a bit about your life. What do you think viewers would like to know about you? Make your vlog chatty, fun and interesting so your viewers will 'like and subscribe'!



Make a timeline

Create a timeline using a piece of string. One millimetre of string will represent one year. Your timeline will stretch from 3100 BCE to today. How long will your piece of string need to be? Where will the year 0 be on your timeline? Can you mark the following events on your timeline:

3100 BCE The first Egyptian pharaoh, Menes, united upper and lower Egypt into one kingdom

2600 BCE The great pyramid of Giza was built.

1539 BCE Egyptian pharaohs began to be buried in the Valley of Kings.

69 BCE Cleopatra was born.

You were born!

Does anything surprise you about your timeline?
What other historical events could you add?

Before You Go

Cleopatra could speak nine languages! Can you learn to say 'hello' in nine different languages? Perhaps your class could confirm their attendance in a different language every day for nine days?

Hola

Bonjour

Salve

Konnichiwa

Watch Next:
Pirate, Ching Shih

